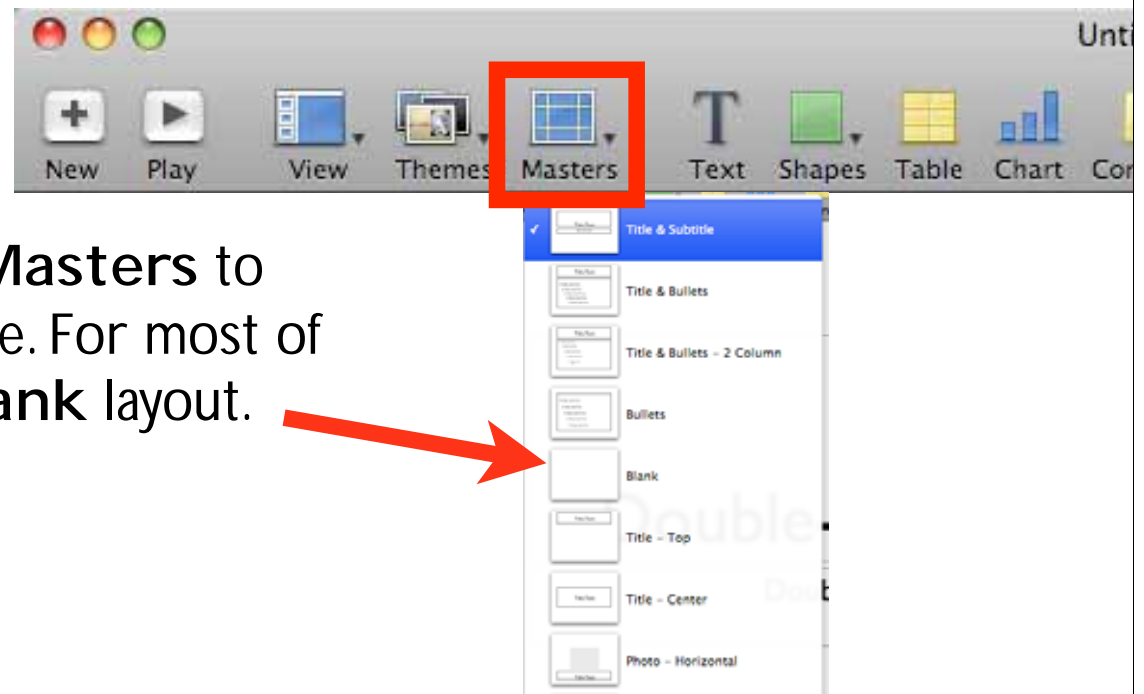
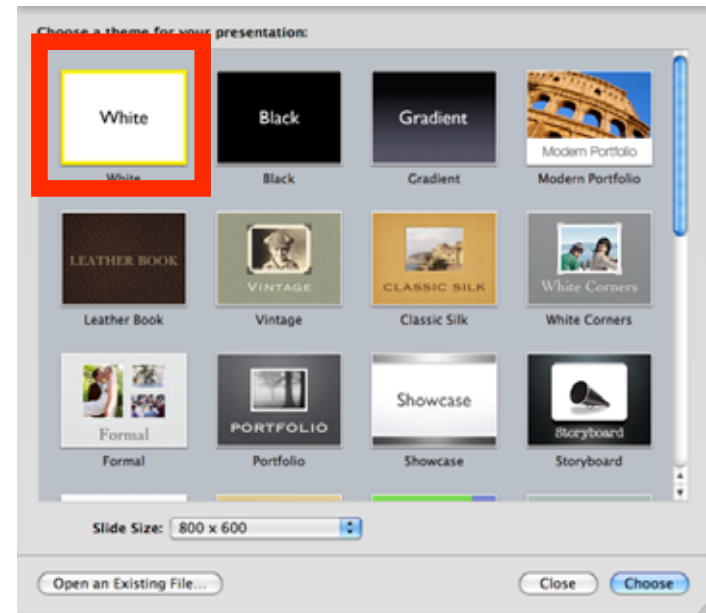


**Digital Imaging
Final Portfolio:
Keynote Intro**

For your portfolio, choose the **white theme**. You will create own theme with the help of Photoshop. Set the slide size to 1024x768.

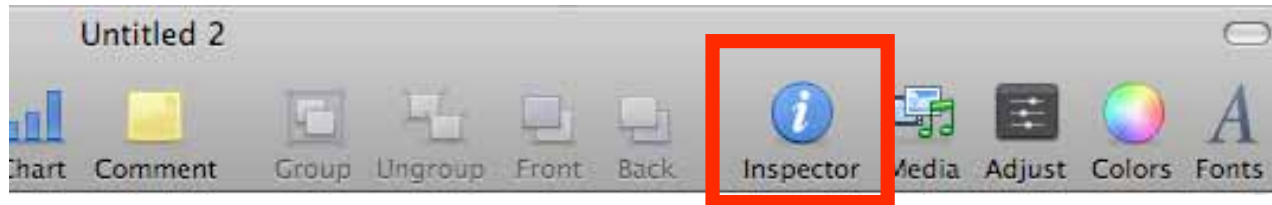


On the top toolbar, click on **Masters** to choose the layout of your slide. For most of the slides, you will use the **blank** layout.

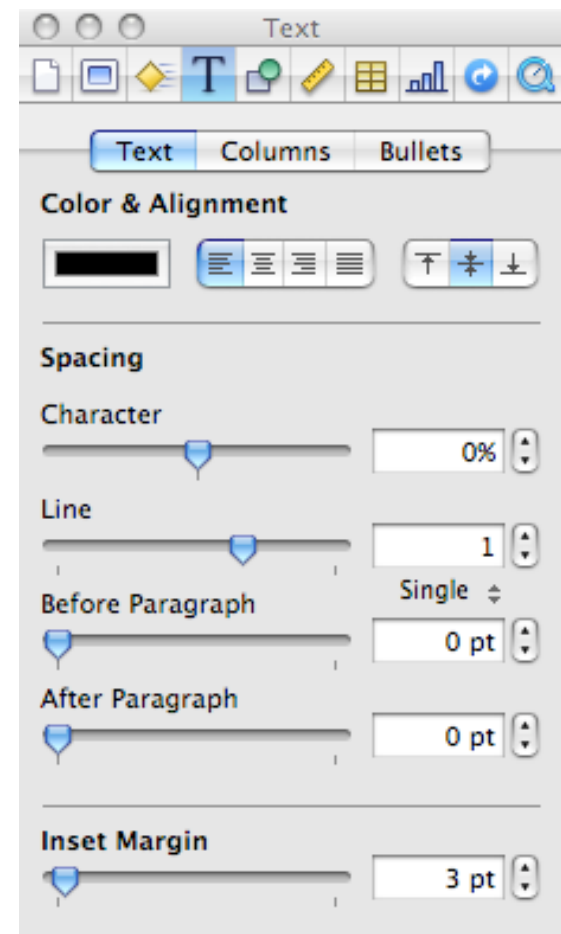


Click on the **Text** icon to add a text box. Click once on the box to select it. Double-click to type.

Change the font and the size of your text by clicking on the font icon



The inspector includes many of the options and features you will use to make your presentation. Click on the inspector icon to make the window to the right appear.



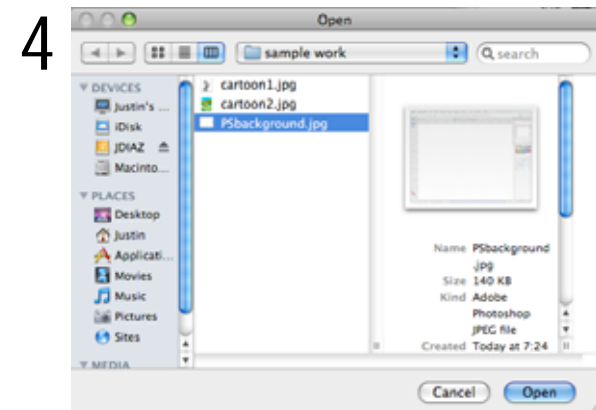
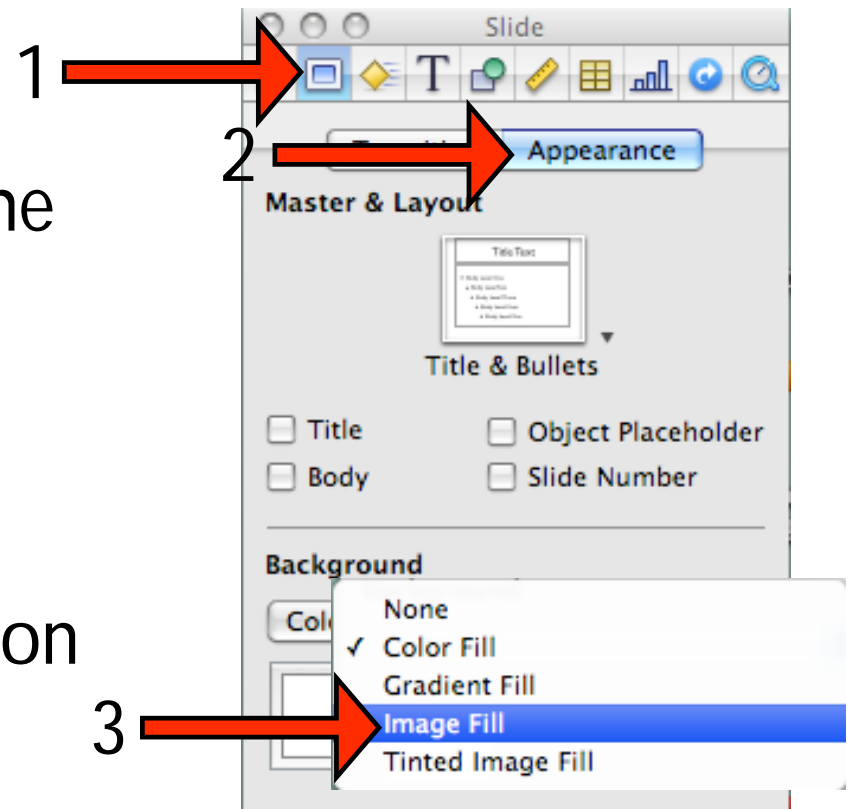
Changing the Background:

1. Click on the **Slide** icon in the inspector window.

2. Click on **Appearance**.

3. Change the Background option to **Image Fill**.

4. Find your selected background image.



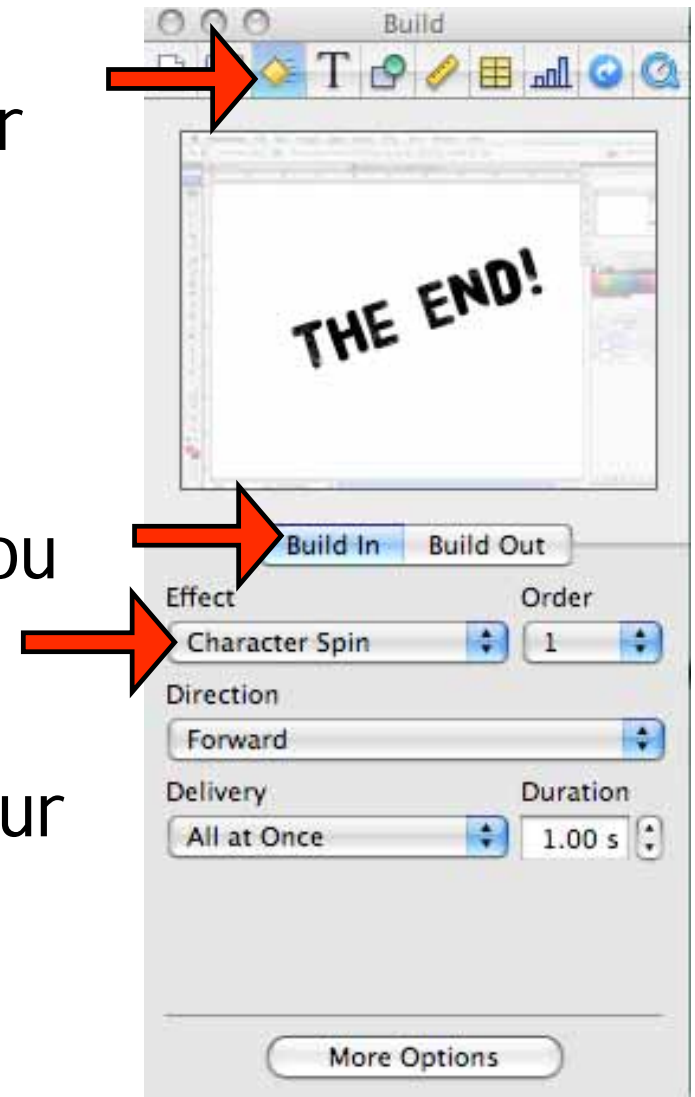
Builds

Builds are animations that you add to objects (text, images) on your slide. To add a build:

Select your object by clicking on it.

Under **Build In**, select the effect you want to apply to the object.

You also can change the order of your builds and how long they last. The inspector will preview what the animation will look like.



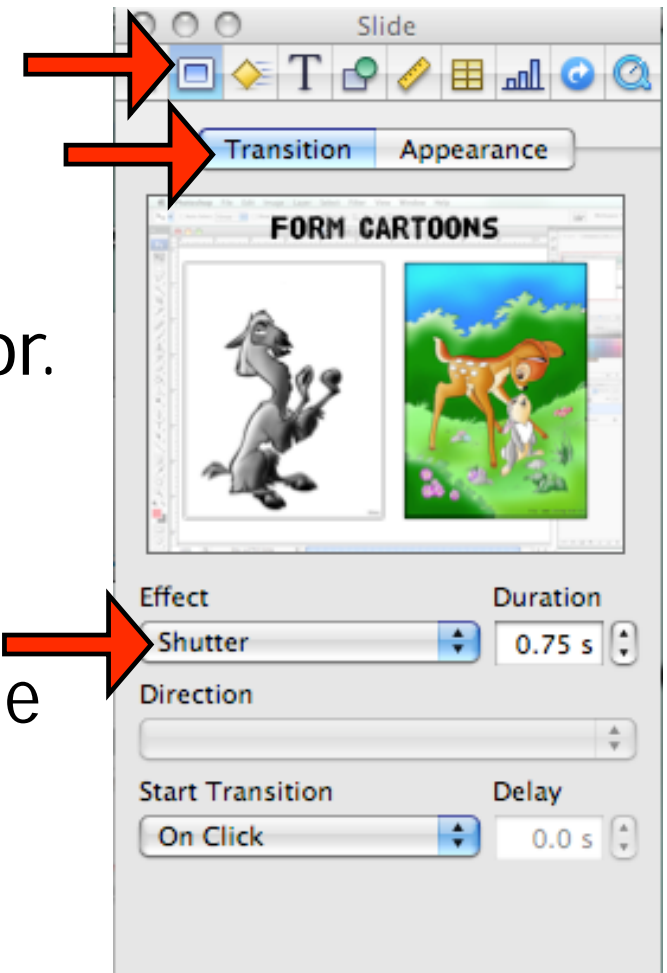
Transitions

Transitions are animations that happen during slide changes. To add a transition:

Click on the **Slide** icon in the inspector.

Click on **Transition**

Choose the effect you want on the slide and how long you want it to last.



Creating a Movie

Click on **File>Export** on the top menu.

Click on **Quicktime**

Set Playback Control to **Self-Playing Movie**

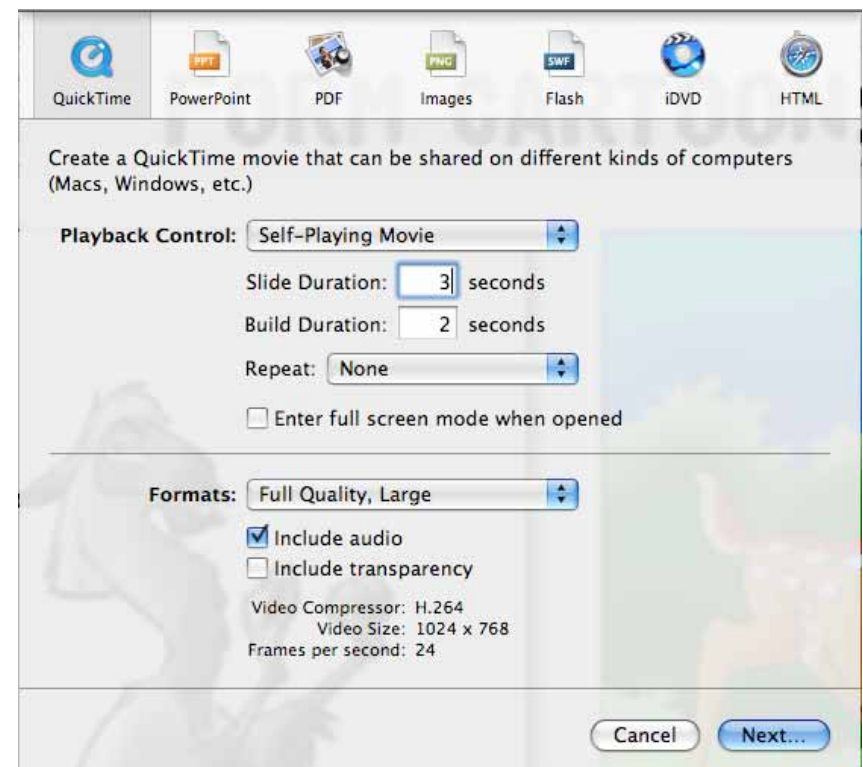
Slide Duration - 3

Build Duration - 2

Click on **Next**

Name your movie (final_name)

Save it to your desktop



Designing your Portfolio

Your slideshow should display the work you completed in digital imaging throughout the semester.

Also, you should design each slide so that it demonstrates a theme/design scheme throughout the slideshow. Each slide should feature this theme through color, font choice, and background image.

In designing your theme, think about what images, colors, font styles, etc. represent **YOU** best.

Creating a Background -
Size (in **Pixels**, not Inches):
1024 Width
768 Height
72 dpi - resolution

Your background will be an important part of the theme you create. Every background image you use should have something in common (color, imagery, texture, etc.)

Your background should enhance your portfolio and the work you are showing. However, make sure the background doesn't distract from the work!